

Trend Lines of Performance Indicators

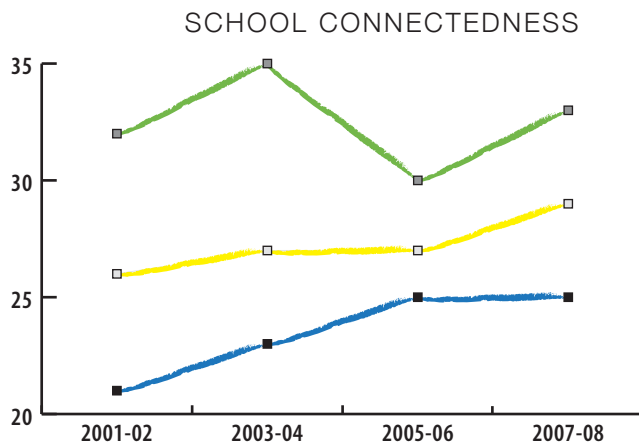
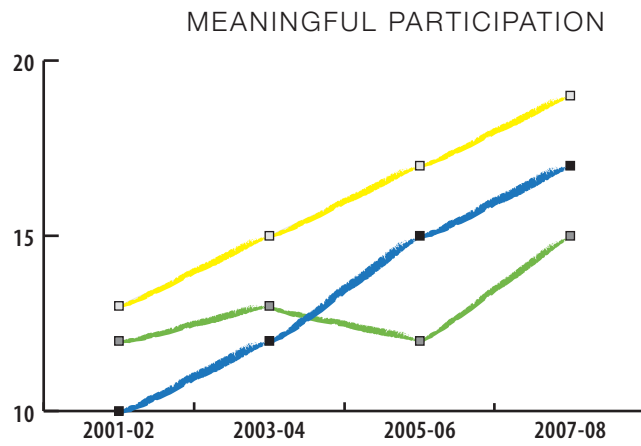
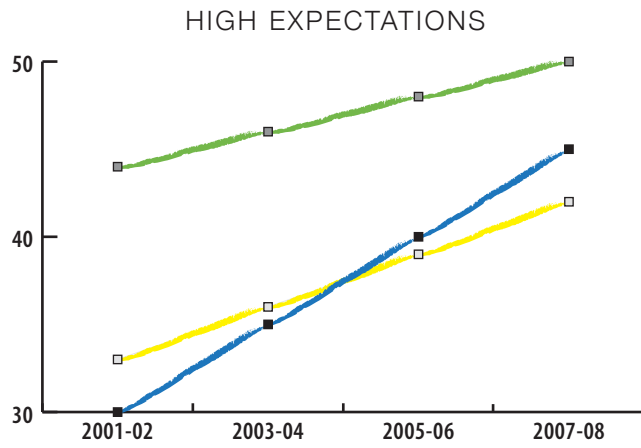
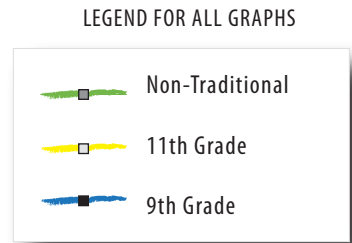
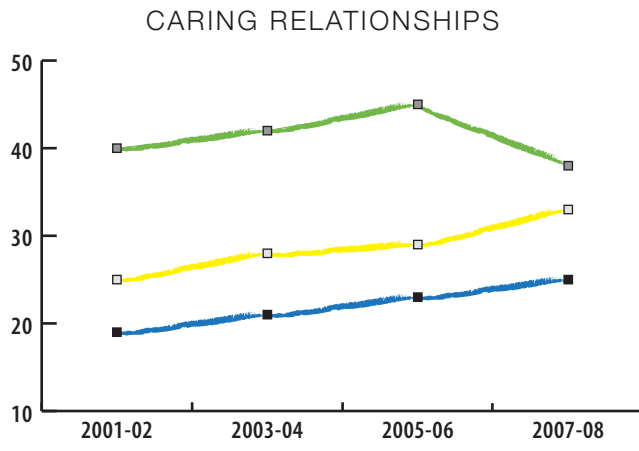
from the California Healthy Kids Survey

Sample School District  
2003-2008

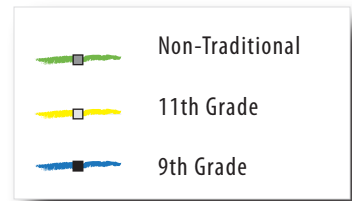
# table of contents

---

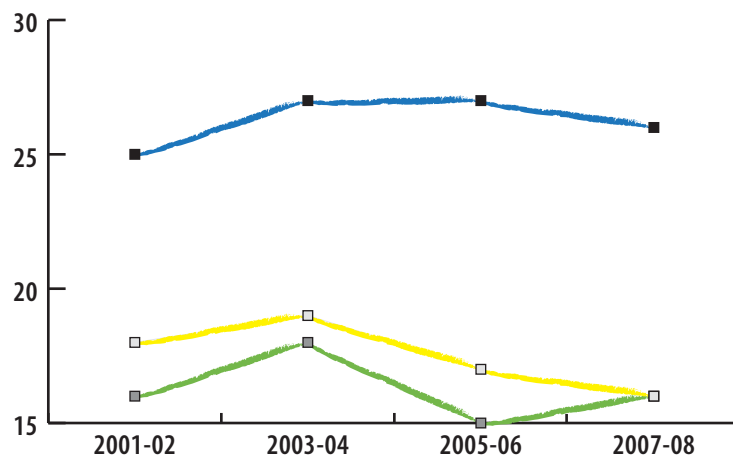
PROTECTIVE FACTORS - HIGH LEVEL OF EXTERNAL ASSETS AT SCHOOL.....	1
Caring relationships	
High expectations	
Meaningful participation	
School connectedness	
VIOLENCE-RELATED BEHAVIORS AND EXPERIENCES .....	2
Afraid of being beaten up	
Feel very safe	
LIFETIME ATOD USE .....	3
Smoke a cigarette	
Smoke marijuana	
CURRENT ATOD USE .....	4
Smoke a cigarette	
Drink alcohol	
Smoke marijuana	
TABLES.....	5-6



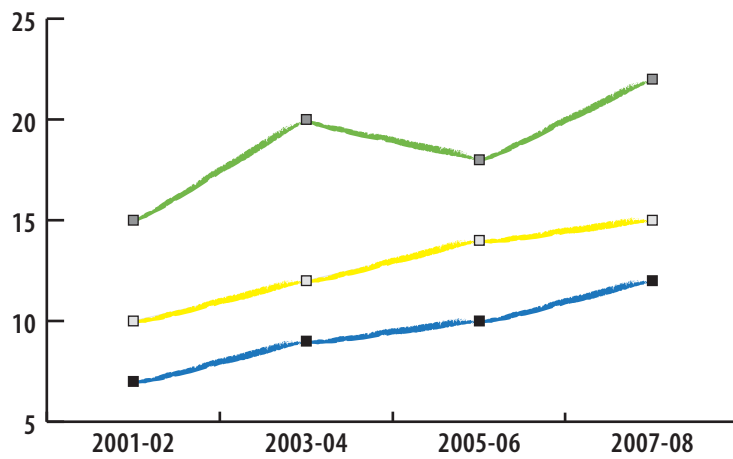
LEGEND FOR ALL GRAPHS



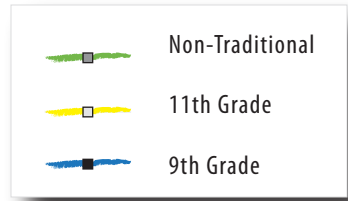
During the past 12 months at school, have you been afraid of being beaten up?



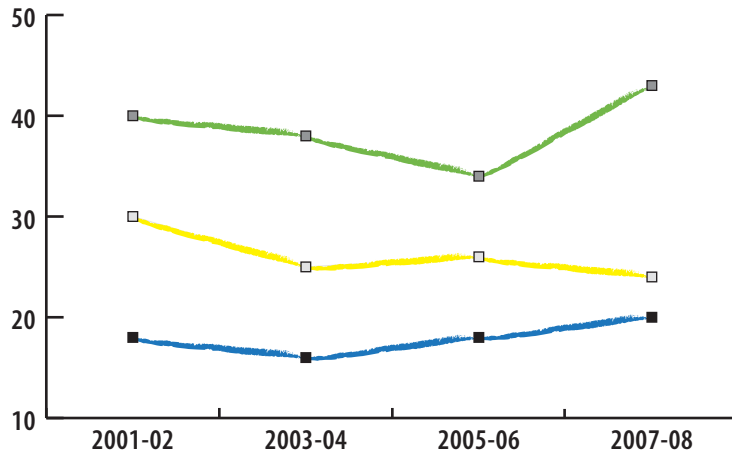
How safe do you feel when you are at school? Very safe.



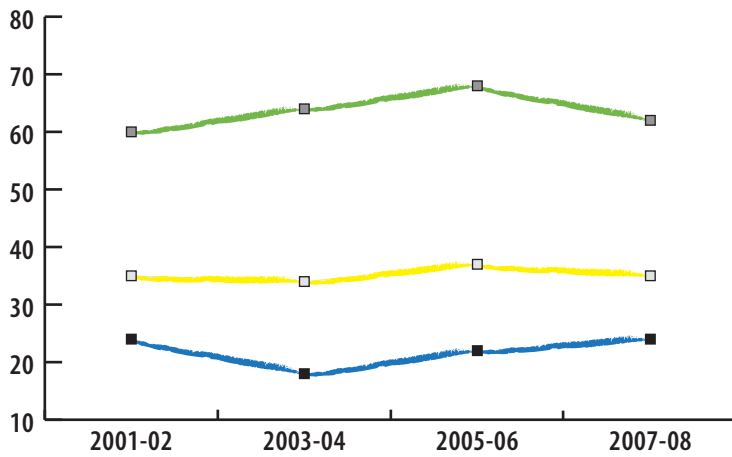
LEGEND FOR ALL GRAPHS



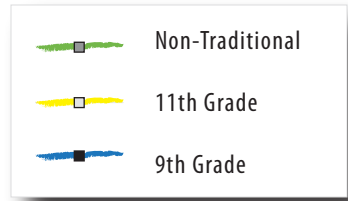
During your life did you ever *smoke a cigarette*?



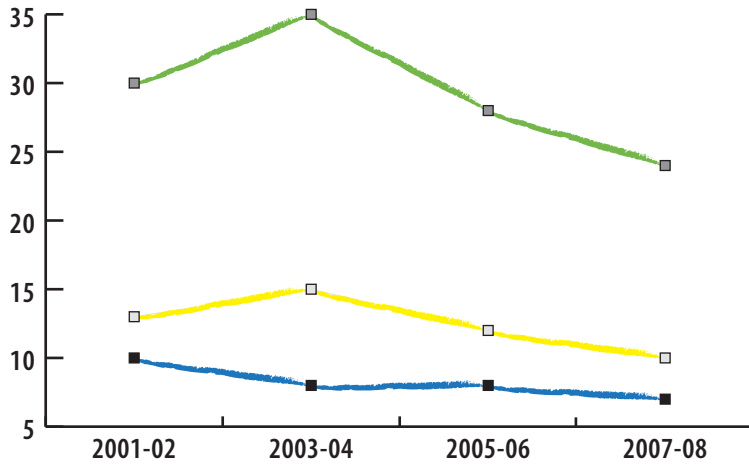
During your life did you ever *smoke marijuana*?



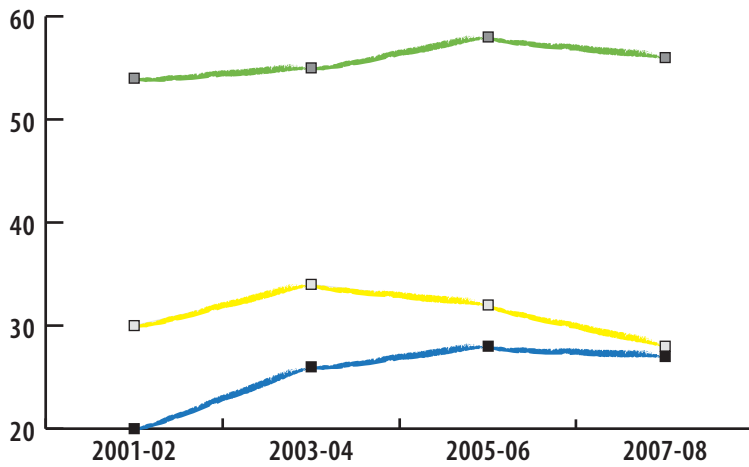
LEGEND FOR ALL GRAPHS



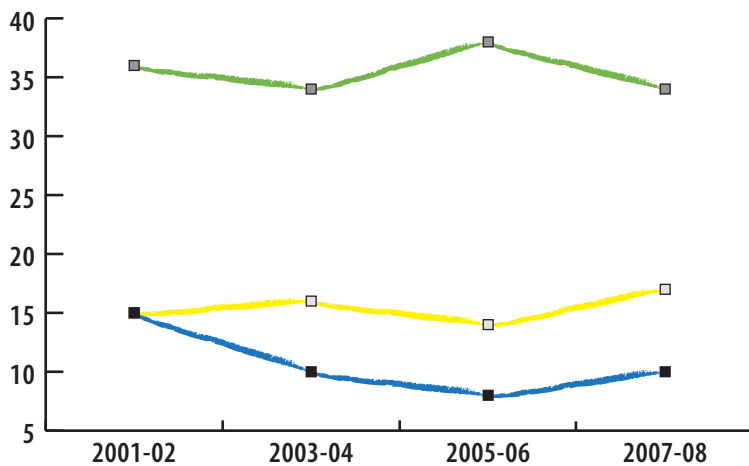
During the past 30 days, did you *smoke a cigarette*?



During the past 30 days, did you *drink alcohol (glass)*?



During the past 30 days, did you *smoke marijuana*?



**CARING RELATIONSHIPS WITH TEACHER OR OTHER ADULT**  
 protective factors - high level of external assets at school

	2001-02	2003-04	2005-06	2007-08
9 <sup>th</sup> grade	19	21	23	25
11 <sup>th</sup> grade	25	28	29	33
non-traditional	40	42	45	38

**HIGH EXPECTATIONS FROM TEACHER OR OTHER ADULT**  
 protective factors - high level of external assets at school

	2001-02	2003-04	2005-06	2007-08
9 <sup>th</sup> grade	30	35	40	45
11 <sup>th</sup> grade	33	36	39	42
non-traditional	44	46	48	50

**OPPORTUNITIES FOR MEANINGFUL PARTICIPATION AT THEIR SCHOOL**  
 protective factors - high level of external assets at school

	2001-02	2003-04	2005-06	2007-08
9 <sup>th</sup> grade	10	12	15	17
11 <sup>th</sup> grade	13	15	17	19
non-traditional	12	13	12	15

**SCHOOL CONNECTEDNESS (ADD HEALTH)**  
 protective factors - high level of external assets at school

	2001-02	2003-04	2005-06	2007-08
9 <sup>th</sup> grade	21	23	25	25
11 <sup>th</sup> grade	26	27	27	29
non-traditional	32	35	30	33

**AFRAID OF BEING BEATEN UP (PAST 12 MONTHS)**  
 violence-related behaviors and experiences

	2001-02	2003-04	2005-06	2007-08
9 <sup>th</sup> grade	25	27	27	26
11 <sup>th</sup> grade	18	19	17	16
non-traditional	16	18	15	16

**FEEL VERY SAFE AT SCHOOL**  
 violence-related behaviors and experiences

	2001-02	2003-04	2005-06	2007-08
9 <sup>th</sup> grade	7	9	10	12
11 <sup>th</sup> grade	10	12	14	15
non-traditional	15	20	18	22

<b>SMOKE A CIGARETTE</b> lifetime ATOD use				
	2001-02	2003-04	2005-06	2007-08
9 <sup>th</sup> grade	18	16	18	20
11 <sup>th</sup> grade	30	25	26	24
non-traditional	40	38	34	43

<b>SMOKE MARIJUANA</b> lifetime ATOD use				
	2001-02	2003-04	2005-06	2007-08
9 <sup>th</sup> grade	24	18	22	24
11 <sup>th</sup> grade	35	34	37	35
non-traditional	60	64	68	62

<b>SMOKE A CIGARETTE</b> current ATOD use				
	2001-02	2003-04	2005-06	2007-08
9 <sup>th</sup> grade	10	8	8	7
11 <sup>th</sup> grade	13	15	12	10
non-traditional	30	35	28	24

<b>DRINK ALCOHOL (GLASS)</b> current ATOD use				
	2001-02	2003-04	2005-06	2007-08
9 <sup>th</sup> grade	20	26	28	27
11 <sup>th</sup> grade	30	34	32	28
non-traditional	54	55	58	56

<b>SMOKE MARIJUANA</b> current ATOD use				
	2001-02	2003-04	2005-06	2007-08
9 <sup>th</sup> grade	15	10	8	10
11 <sup>th</sup> grade	15	16	14	17
non-traditional	36	34	38	34